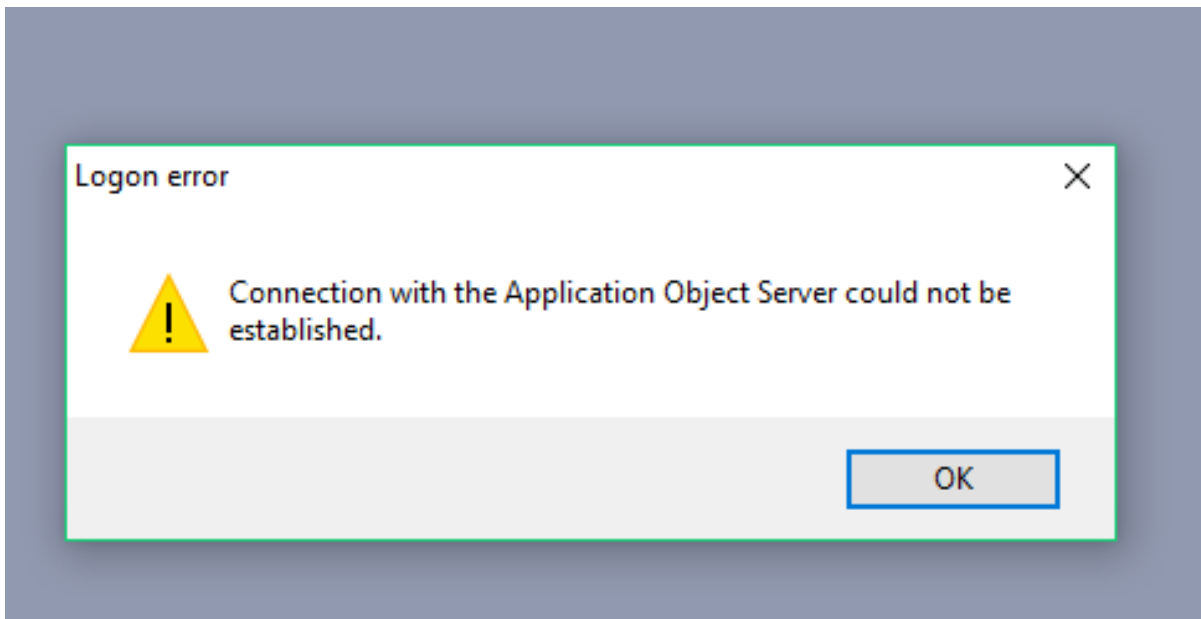
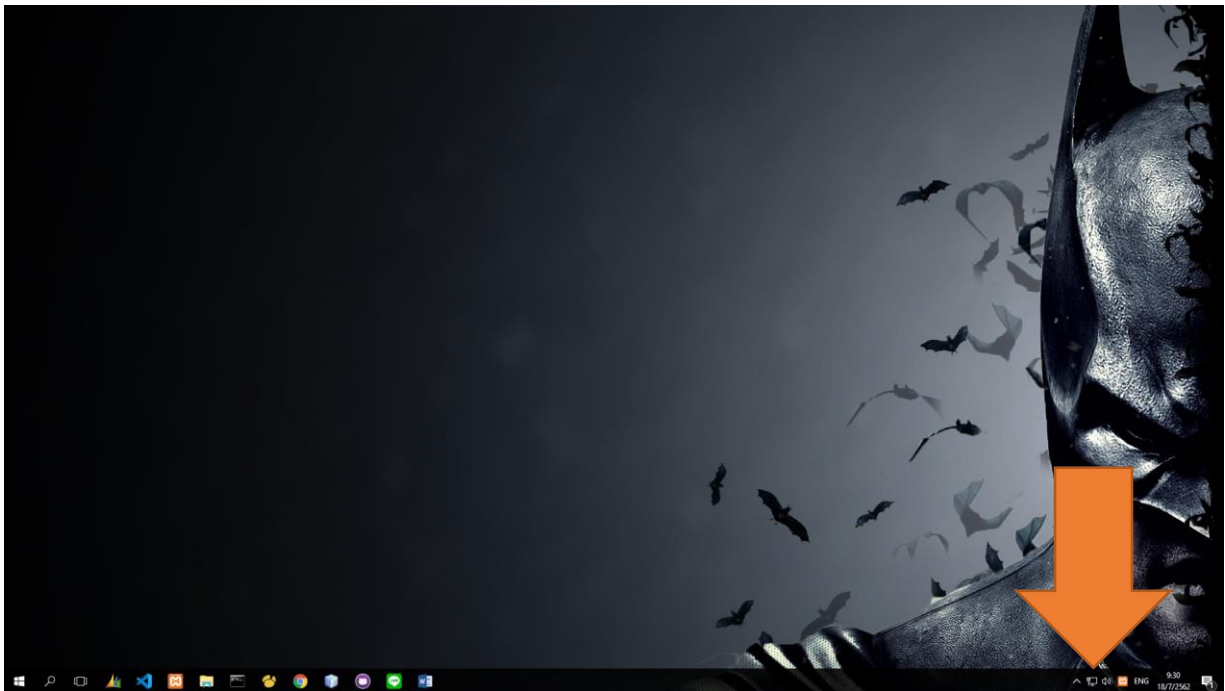


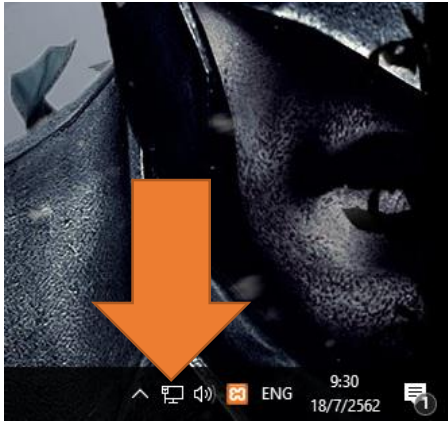
แก้ปัญหา Logon error **Connection with the application object server could not be established**



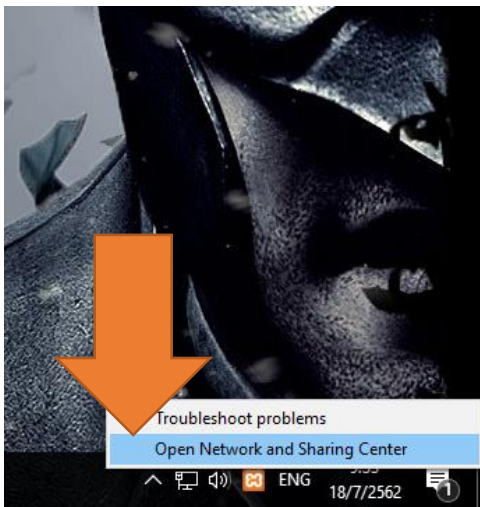
คำอธิบายได้ภาพครับ



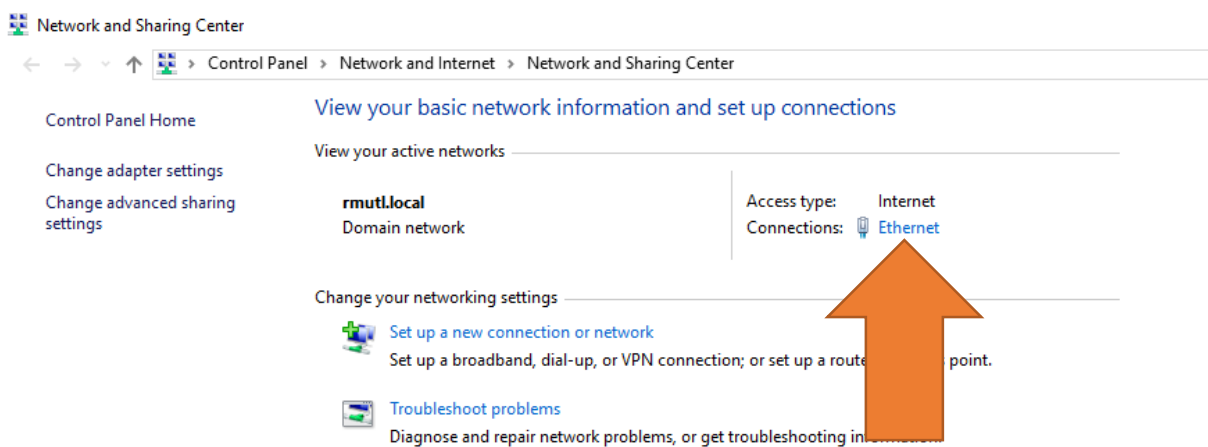
หารูป คอมพิวเตอร์  อยู่ตรงมุมขวาล่างของหน้า จอ



คลิกขวาตรงรูป คอมพิวเตอร์ นี้



เลือก open network and sharing center



คลิกตรงตัวหนังสือ สีน้ำเงิน ตามรูป

Control Panel Home

Change adapter settings

Change advanced sharing settings

View your basic network information and set up connections

View your active networks

rmult.local
Domain network

Access type: Internet
Connections: Ethernet

Change your networking settings

[Set up a new connection or network](#)
Set up a broadband, dial-up, or VPN connection; or set up a wireless network

[Troubleshoot problems](#)
Diagnose and repair network problems, or get troubleshooting help

Ethernet Status

General

Connection

IPv4 Connectivity:	Internet
IPv6 Connectivity:	No network access
Media State:	Enabled
Duration:	01:22:15
Speed:	100.0 Mbps

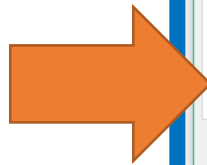
Details...

Activity

Sent		Received	
Bytes:	239,718,272	2,758,016,142	

Properties Disable Diagnose

Close



จะขึ้นหน้าต่างแบบในรูป แล้ว คลิกที่ Properties

Control Panel Home

Change adapter settings

Change advanced sharing settings

View your basic network information and set up connections

View your active networks

rmutl.local
Domain network

Access type: Internet
Connections: Ethernet

Ethernet Status

General

Connection

IPv4 Connectivity: Internet
IPv6 Connectivity: No network access
Media State: Enabled
Duration: 01:24:26
Speed: 100.0 Mbps

Activity

Sent: 239,726,553 Bytes

Details... Properties Disable Diagnose

Ethernet Properties

Networking

Connect using:
Realtek PCIe GBE Family Controller

This connection uses the following items:

- Client for Microsoft Networks
- File and Printer Sharing for Microsoft Networks
- VirtualBox NDIS6 Bridged Networking Driver
- QoS Packet Scheduler
- Internet Protocol Version 4 (TCP/IPv4)
- Microsoft Network Adapter Multiplexor Protocol
- Microsoft LLDP Protocol Driver

Install... Uninstall Properties

Description
Transmission Control Protocol/Internet Protocol. The default wide area network protocol that provides communication across diverse interconnected networks.

OK Cancel

ดัดแปลง คลิกที่ internet protocol version 4 (tcp/ipv4)

Control Panel Home

View your basic network information and set up connections

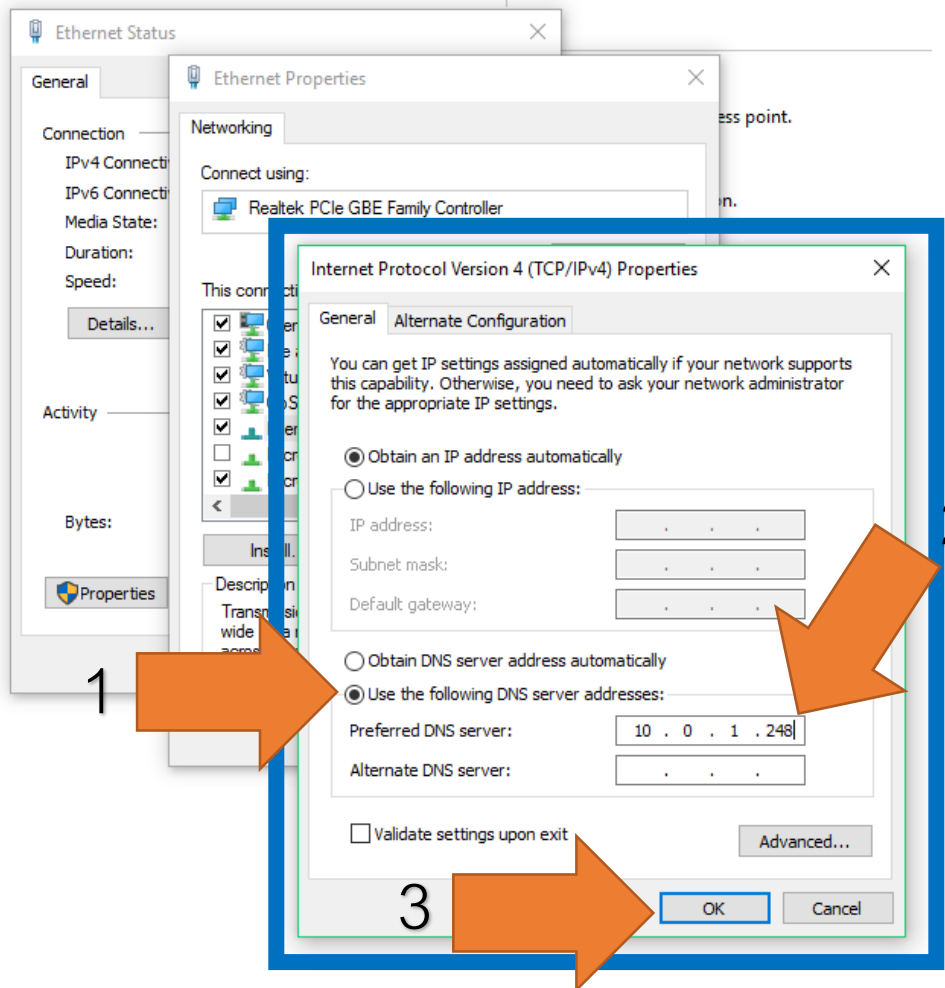
View your active networks

Change adapter settings

Change advanced sharing settings

rmult.local
Domain network

Access type: Internet
Connections: Ethernet



จากนี้ทำตามขั้นตอน

1. เลือก Use the following dns server addresses
2. พิมพ์ตรงช่อง Preferrend DNS Server 10.0.1.248 ตามรูป
3. คลิก OK แล้วเข้า ERP ได้ตามปกติ